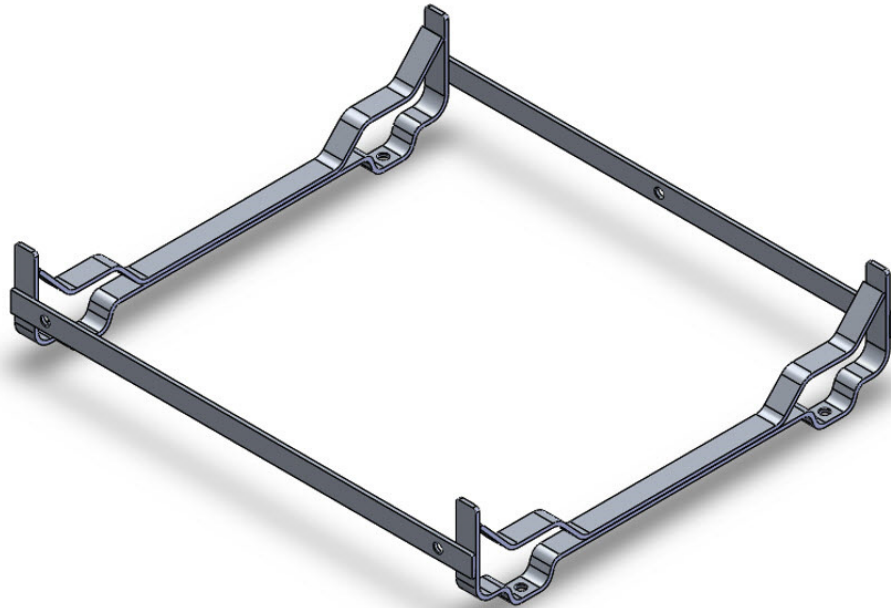




Stainless steel cradle, including lashing for 8DK-16DK+ in low profile container

Item number: 1007947



A standard deck cradle designed to meet the requirements for stowage of your VIKING liferaft in a marine and offshore environment. A proven structure that has been used by VIKING for decades. The cradle should be mounted by bolting to the hull foundation support.

Bolt, washers and nuts will not be supplied by VIKING as they may differ in length depending on the support foundation onboard. Pre-drilled foundation holes have a diameter of Ø15.

Cradle fits the following liferaft sizes:

- 8DK+
- 10DK+
- 12DK+
- 16DK+

Material:	Stainless steel AISI 316
Dimensions:	H166xW740xD676 mm
Weight:	7.5 kg
Surface treatment:	Electro polished
Welding:	According to DS/EN 5871 class C
Lashing for fixing of liferaft:	Included