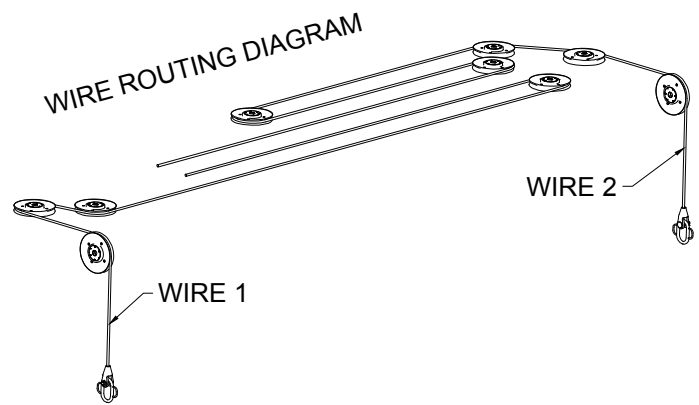
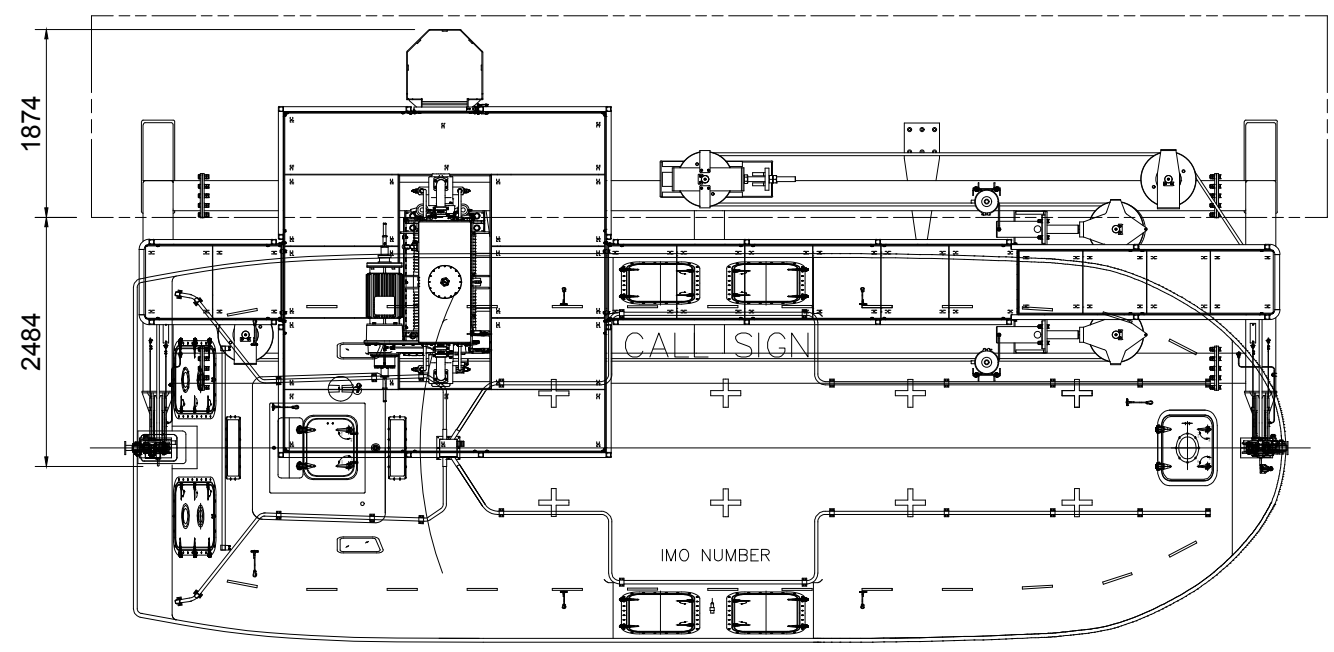
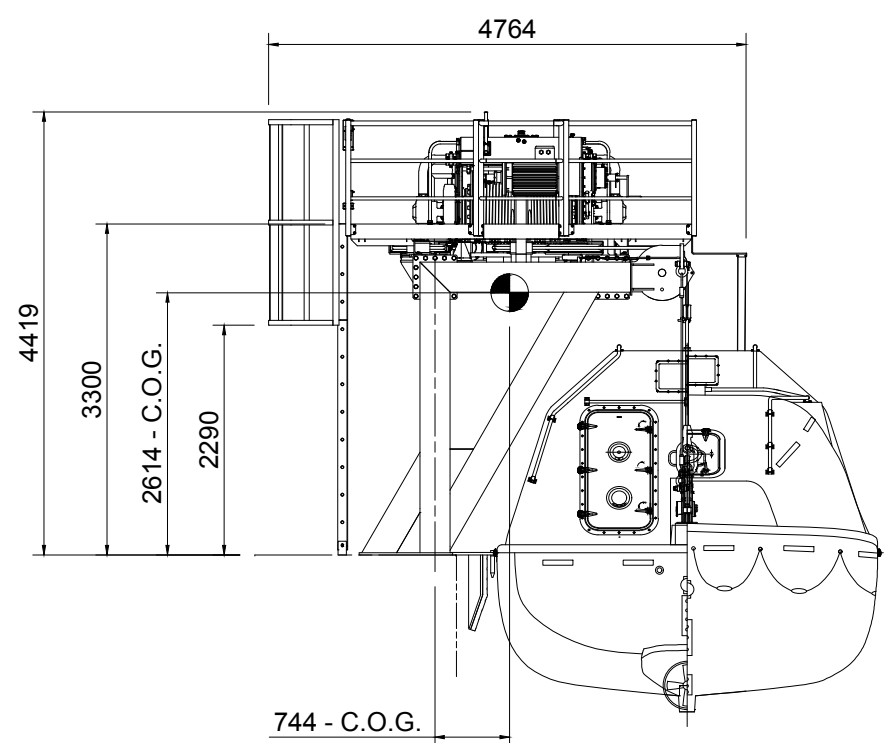
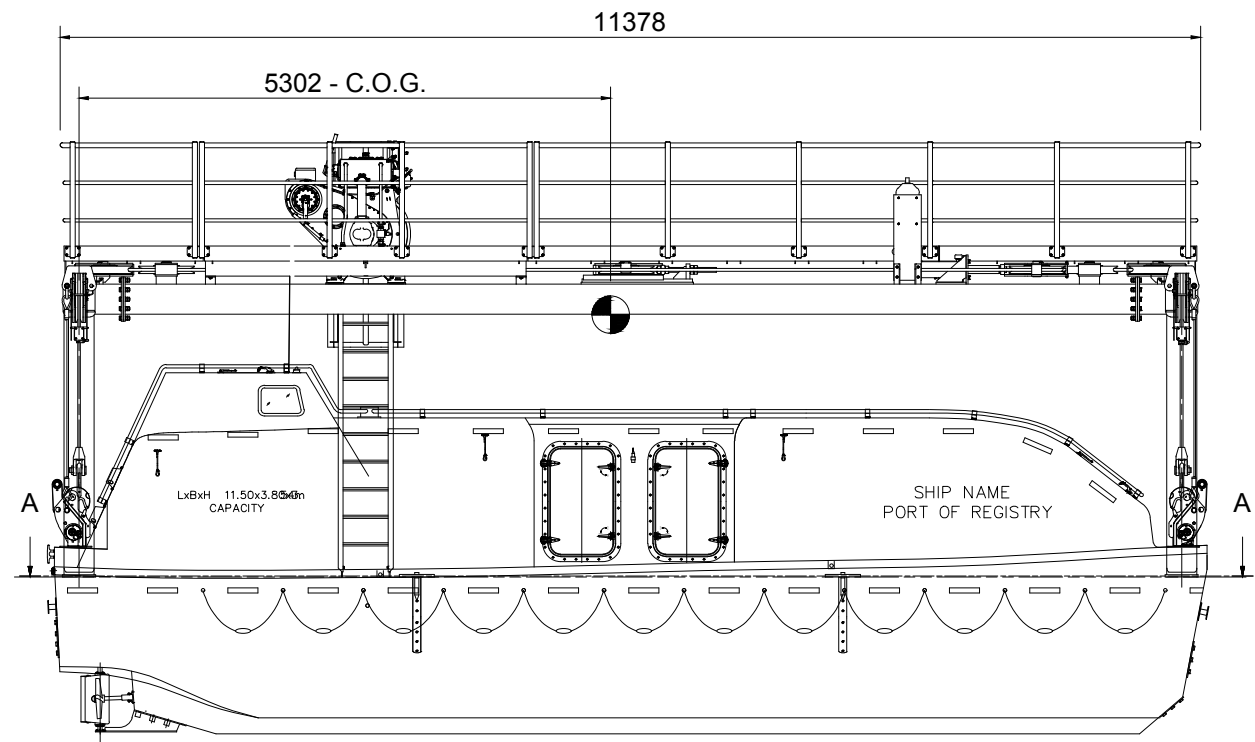
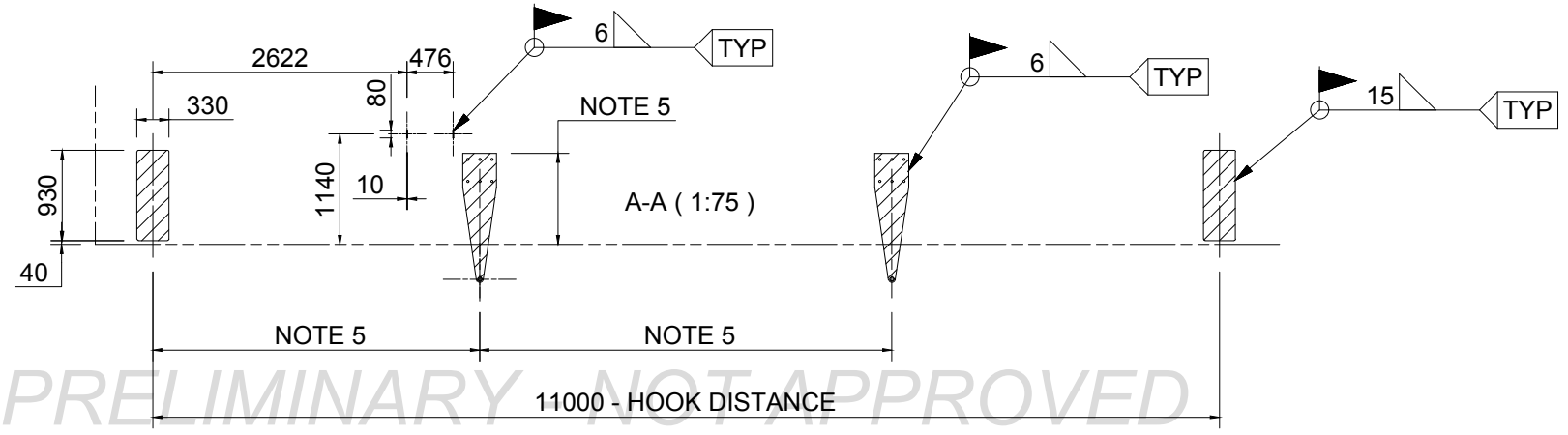


6 5 4 3 2 1



- NOTES:**
- ALL FIELD WELDS MARKED WITH FLAG TO BE WELDED BY YARD DURING INSTALLATION.
 - ALL FIELD WELDS TO BE PERFORMED ACC. TO APPROVED WPS (YARD RESPONSIBILITY)
 - ALL FIELD WELDING IS SUBJECTED TO CLASS APPROVAL PRIOR TO START WELDING.
 - ALL ELECTRIC WIRING FROM STARTER CABINET TO DAVIT BY YARD.
 - INSTALLATION OF PIN LASHING TO BE FINALIZED AFTER LIFEBOAT INSTALLATION.
 - WIRE LENGTHS:
 WIRE 1: $21,0 \text{ M} + (H+H1) + 3 \text{ M}$
 WIRE 2: $22,0 \text{ M} + (H+H1) + 3 \text{ M}$
 H = HEIGHT FROM STOWAGE TO L.W.L.
 H1 = ADDITIONAL HEIGHT DUE TO LIST & TRIM
 - FOR REACTION FORCES IN DECK, PLEASE SEE SEPARATE REPORT.



REV	DESCRIPTION	BY	CHECK	APPRO	DATE
0	Issued for construction	PGO	GNI	GNI	09.09.2019

REVISION HISTORY	
	VIKING Norsafe Life-Saving Equipment Norway AS P.O. Box 115 Tel: +47 37 05 85 00 4852 Færvik Fax: +47 37 05 85 01 NORWAY 24/7 Service: +47 37 05 63 33 Email: viking@viking-life.com
DWG SIZE: A3	SCALE: 1:75 COPY OF:
CLIENT NO:	PROJECTION METHOD:
TOLERANCES: ISO 2768-mk, ISO 13920-BF	REVISION: 0
DWG No: G-500467	PROJECT:
PART NO:	WEIGHT: N/A SHEET: 1/1

C-11 NO LIFEBOAT DAVIT WITH JYN-115 TELB STARBOARD SIDE GENERAL ARRANGEMENT	
--	--

PRELIMINARY NOT APPROVED

6 5 4 3 2 1