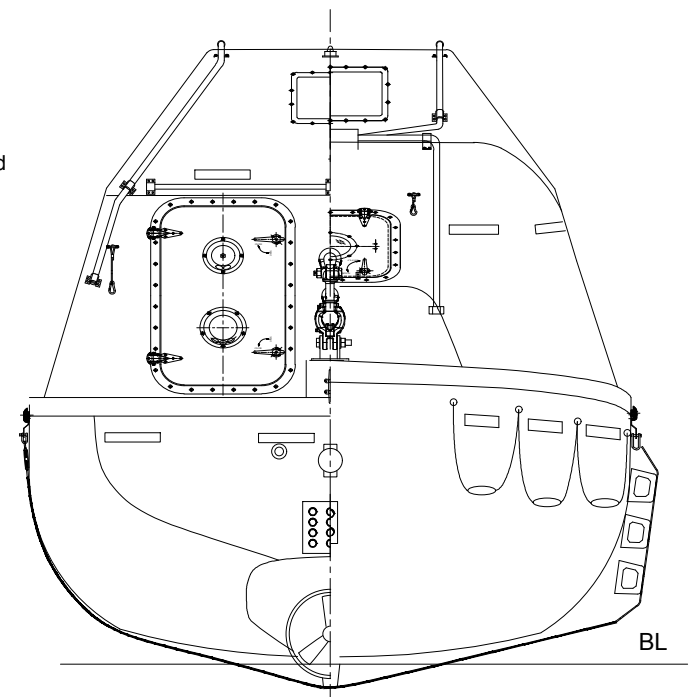
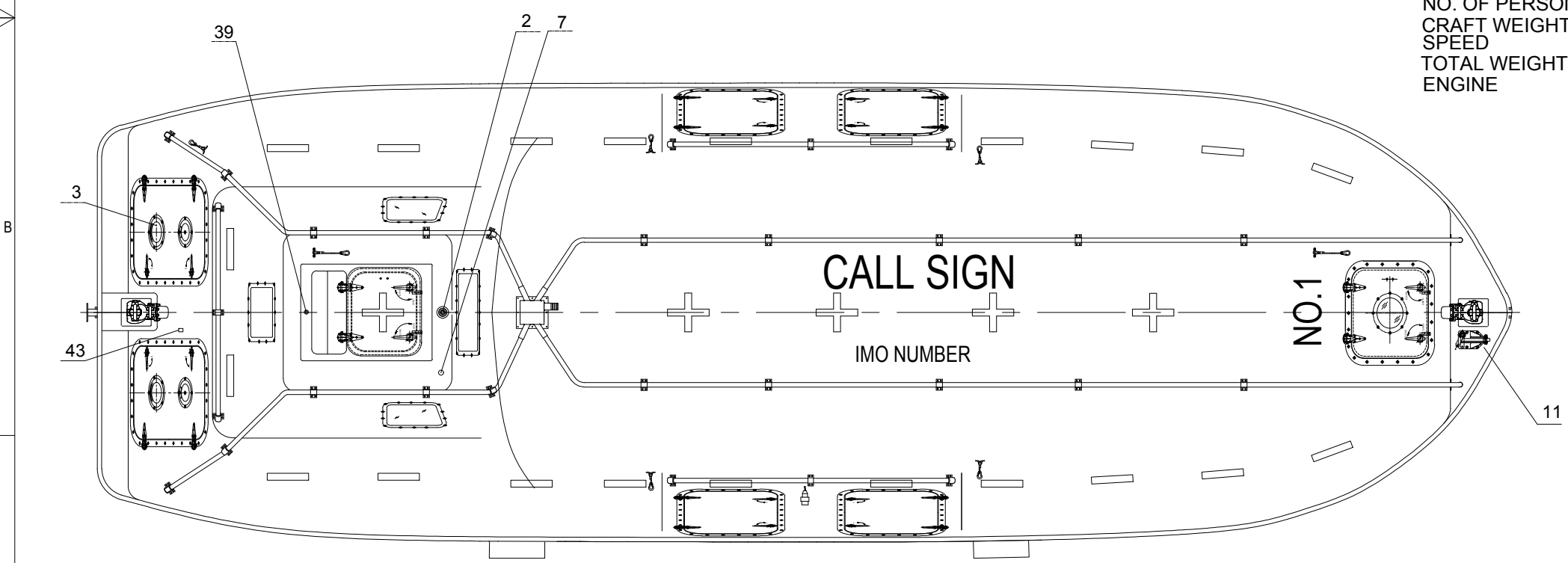


ELEVATION

- LENGTH (MOULDED) 10.155M
- BREADTH (MOULDED) 3.25M
- DEPTH 1.40M
- TOTAL HEIGHT 3.40M
- HOOK TYPE NADIRO DIB 75
- HOOK DIST. 9.675M
- NO. OF PERSON 105P
- CRAFT WEIGHT 5937.5KG
- SPEED >6 KNOTS
- TOTAL WEIGHT 14600KG (82.5Kg/pers)
- ENGINE NLDE-3
- NLDE-4
- VETUS M4.55
- BUKH DV29 RME
- BUKH 36 EPA



REAR/FRONT VIEW



PLAN (BOAT ON PORT SIDE SHOWN)

NO.	DESCRIPTION	QTY.	REMARKS
48	HYDRAULIC PUMP OR TANK	1	
47	ACCUMULATOR	1	
46	PILOT CONTROLLED VALVE	1	
45	CONTROL PANEL	1	
44	SOCKET FOR BATTERY CHARGING	1	IP67
43	VENT FOR BATTERIES	1	SS 316 & PVC HOSE
42	EQUIPMENT SHELF	2	F.R.P.
41	WATER SENSOR UNIT	1	
40	EMERGENCY RELEASE VALVE	1	
39	RAIN COLLECTION	1	BRASS
38	SPRINKLE OUTLET/PIPING	1 LOT	AISI 316L
37	EMERGENCY STEERING HANDLE	1	HOT DIPPED GALVANIZED STEEL
36	SKATES	2	RUBBER & ALUM. PLATE
35	RAIL	3	SS316
34	FOOD COMPARTMENT	2	F.R.P.
33	OAR/CRUTCH	2	F.R.P.
32	WATER COMPARTMENT	2	F.R.P. WATER TIGHT
31	STEERING GEAR	1	
30	ENGINE & PROPELLER SHAFT	1	
29	STEERING NOZZLE & PROPELLER	1	F.R.P. / NiMn-Bronze Cu3-Cu4
28	BATTERIES	2	70AH
27	AXE	2	
26	PILLAR	1	F.R.P.
25	SPRINKLE PUMP	1	90-80CBPJ
24	DRAIN PLUG	1	BRASS
23	MANUAL PUMP	1	
22	FIRE EXTINGUISHER	1	
21	FUEL TANK	1	SEA WATER RESISTANT ALUM.
20	AIR CYLINDER	4	
19	SAFETY BELT	1/PERS	
18	EQUIPMENT COMPARTMENT	2	
17	DOOR LATCH	1 LOT	AISI 316L & PVC SHIELD WIRE ROPE
16	BACK REST	1	PLYWOOD (18MM THKx400MM H.)
15	CONTROL PANEL	1	
14	SEARCH LIGHT	1	
13	INT. LIGHT	2	
12	HELM CHAIR	1	F.R.P.
11	4.6T PAINTER HOOK	1	HOT DIPPED GALVANIZED STEEL
10	GRIPPING BOBBIN	2	HOT DIPPED GALVANIZED STEEL
9	HOOKS DEVICE ARRANGEMENT	2	NADIRO DIB 75
8	LIFE LINE	2	PVC SHIELD WIRE ROPE
7	REMOTE CONTROL LINE HOLE	1	
6	DOOR WINDOW & HATCH	1 LOT	
5	BOLLARD	1	AISI 316L
4	REFLECT LIGHT STRIP	1 LOT	
3	VENTILATOR	4	
2	POSITION LIGHT	1	
1	RADAR REFLECTOR	1	

NO.	REF. DWG. NO.	DESCRIPTION	BY	CHECK	APPRO	DATE
1		Use new template	KARL	PHLI	THWA	02/07/2019
0		Issued construction	KARL	PHLI	THWA	23/04/2019

REVISION HISTORY

VIKING NORSAFE Life-Saving Equipment Norway AS
 P.O. Box 115, 4852 Faerвик, NORWAY
 Tel: +47 37 05 85 00, Fax: +47 37 05 85 01, 24/7 Service: +47 37 05 63 33, Email: viking@viking-life.com

DWG. NO. G-503172	SCALE 1:30	COPY OF	PROJECTION METHOD	PART NO.	WEIGHT	SHEET 1 / 1
TOLERANCES: ISO 2768-mk, ISO 13920-BF	REVISION 1	PROJECT STANDARD	EXTERNAL ARRANGEMENT NADIRO DIB 75 JYN-100T GENERAL			

Due to manufacturing reasons dimensions may vary up to 50mm