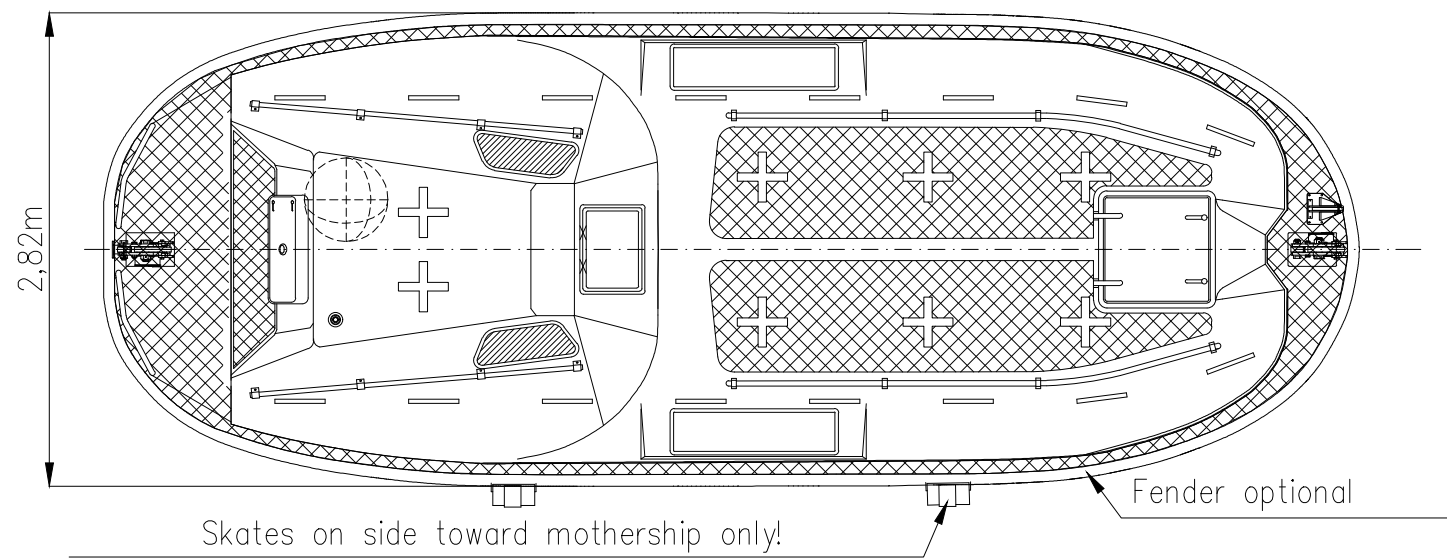


VIEW ON AFT  
LOOKING FORWARD

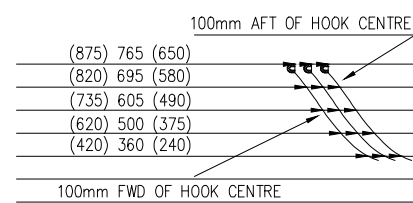
VIEW ON BOW  
LOOKING AFT

7,4 T.E.L.B. "MATHILDA"  
MAIN DIMENSIONS:

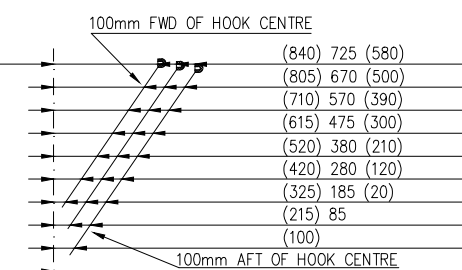
Length over all (without fender)	7,38m
Length over all (with fender)	7,52m
Beam (without fender)	2,71m
Beam (with fender)	2,82m
Total height	3,12m
Hook distance	6,87m
Hook height (fore)	1,95m
Hook height (aft)	1,66m
Capacity	max. 50 pers.
Weight of boat inc. all equipment	3775 kg
Total davit load(82,5kg/pers)	7900 kg



SECTIONS AT AFT HOOK LOOKING FORWARD



SECTION AT FORWARD HOOK LOOKING AFT



Due to manufacturing reasons  
dimensions may vary up to 50mm

ITEM	QTY	DESCRIPTION	PART NO	DOC.REF	MATERIAL	T. MASS
BILL OF MATERIALS						
0	Issued for construction		ATE	PPE	ATE	29.08.2019
REV	DESCRIPTION		BY	CHECK	APPRO	DATE
NORSAFE REVISION HISTORY						
		VIKING Norsafe Life-Saving Equipment Norway AS P.O Box 115 Tel: +47 37 05 85 00 4852 Færvik Fax: +47 37 05 85 01 NORWAY 24/7 Service: +47 37 05 63 33 Email: viking@viking-life.com				
		This drawing is the sole property of VIKING Norsafe Life-Saving Equipment Norway AS. It must not be submitted to other parties nor used in any manner detrimental to our interests. It shall not be copied, reproduced, used for manufacturing or sale without the written consent of VIKING Norsafe Life-Saving Equipment Norway AS. All rights are reserved.				
DWG SIZE: A3	SCALE:	COPY OF:	PART NO.	WEIGHT:	SHEET: 1/1	
CLIENT NO:	PROJECTION METHOD		External General Arrangement			
TOLERANCES: ISO 2768-mk, ISO 13920-BF	REVISION: 0		Mathilda-74 TELB			
DWG No: G-500836	PROJECT:		TOR MK2-S hooks			
			Cargo version			